



EnerRocket™
CONTINUOUSLY SAFEGUARDING

ESH 12-710W FR

SMF VRLA RECHARGEABLE BATTERY

HIGH RATE
LONG LIFE SERIES

APPLICATIONS

- UPS Systems
- Telecommunication Systems
- Fire Alarm Safety & Security Systems
- Medical Equipment

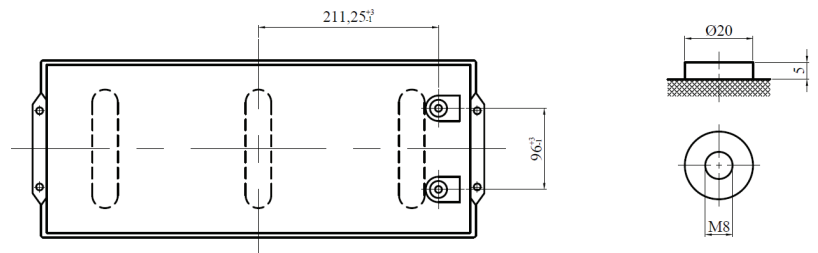
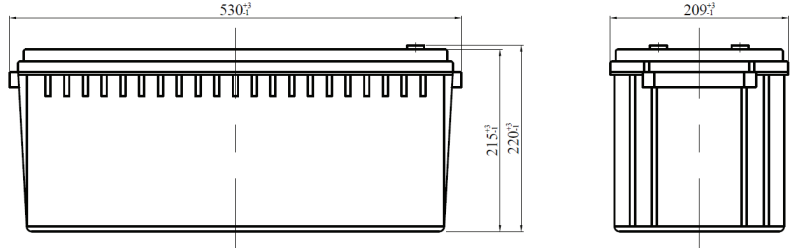
COMPLIANCE STANDARDS

- IEC 60896 PART 21 & 22
- BS6290-4
- EUROBAT- HIGH Performance

TECHNICAL FEATURES



- Non-Spillable Sealed Construction
- Absorptive Glass Mat System (AGM System)
- ABS (Acrylonitrile Butadiene Styrene) construction
- Gas Recombination
- Venting System for low internal pressure
- Low Self-Discharge
- Heavy-Duty, Highly Optimized Grids
- High Power Output



SPECIFICATIONS

Length	Width	Height	Total Height	Weight (kg)
530mm	209mm	215mm	220mm	57.0 ± 5%

CHARACTERISTICS

Nominal Voltage	12V	
Design Life	12 Years	
Capacity (25°C)	15min 1.67ECV	200 AH
Internal Resistance(25°C, 100% Charge)	≤3.0 mΩ	
Self Discharge (20°C)	1 month	Remaining Capacity 97%
Operating Temperature	Discharge	-20°C - 60°C
	Charge	-10°C - 60°C
	Storage	-20°C - 60°C
Normal Operating Temperature	25°C ± 3°C	
Maximum Discharge current (25°C)	1000A (5sec)	
Maximum Charging current (25°C)	60A	
Charge Methods Constant Voltage Charge 25°C Cyclic Use	14.4 to 14.7V	
	Temp.Compensation -30mV/°C	
Charge Methods Constant Voltage Charge 25°C Standby Use	13.4 to 13.8V	
	Temp. Compensation -20mV/°C	

CONSTANT CURRENT DISCHARGE (Amperes) AT 25 °C

End Voltage Volt/Cell	3min	5min	10min	15min	20min	25min	30min	45min	60min
1.60V	943	714	492	362	330	294	265	207	162
1.65V	939	711	489	360	329	293	263	205	160
1.67V	929	702	483	356	327	290	259	198	155
1.70V	913	687	464	350	320	281	254	192	150
1.75V	899	669	454	342	314	277	248	184	143
1.80V	884	655	434	334	304	268	240	176	138

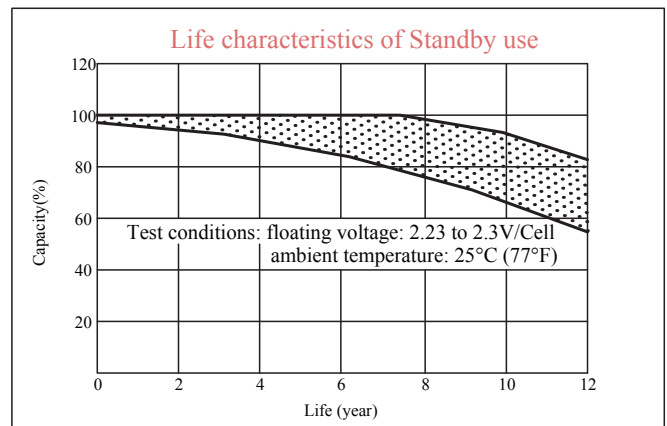
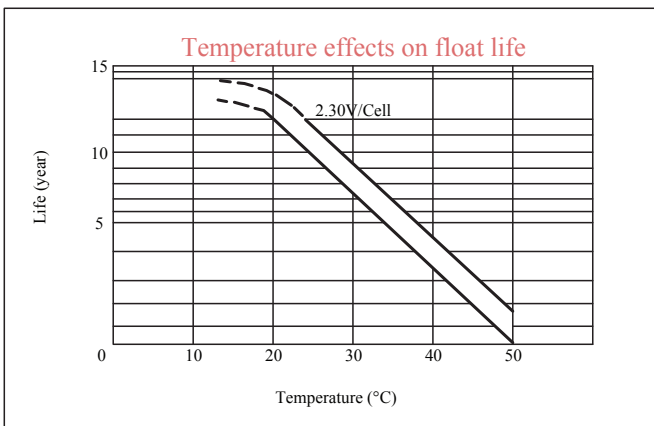
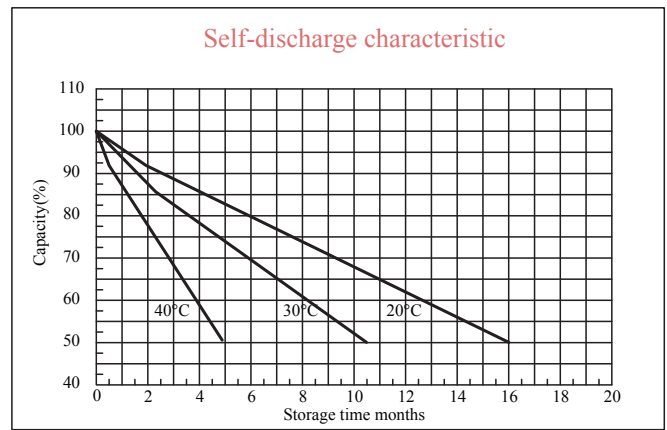
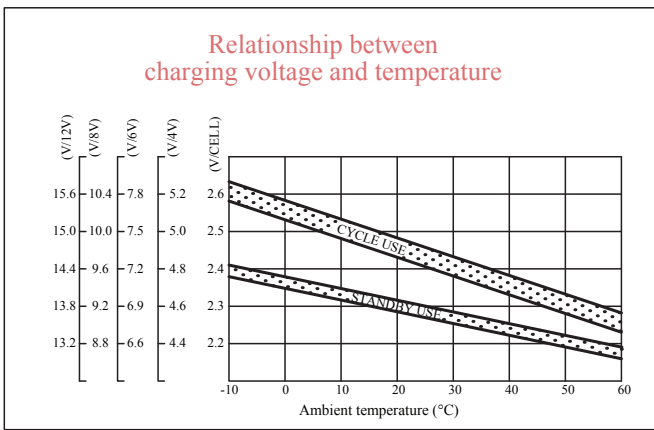
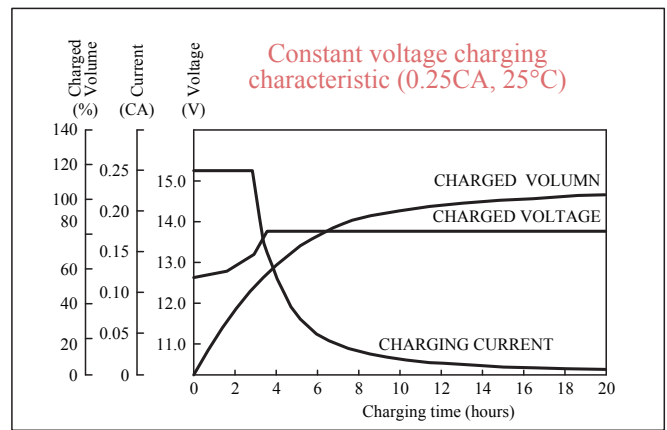
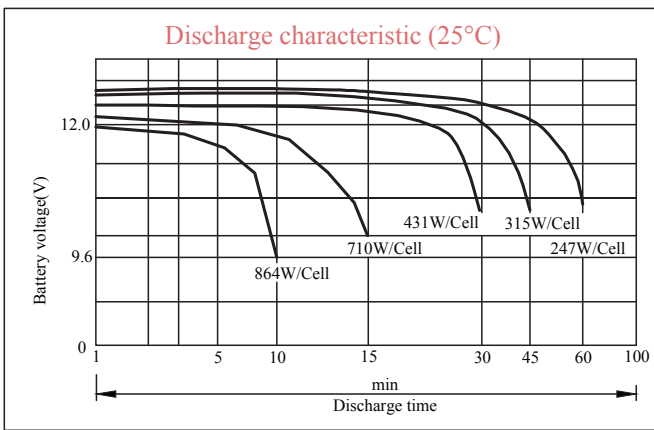
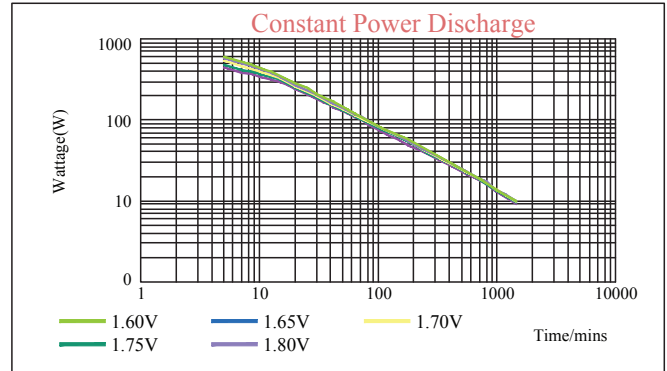
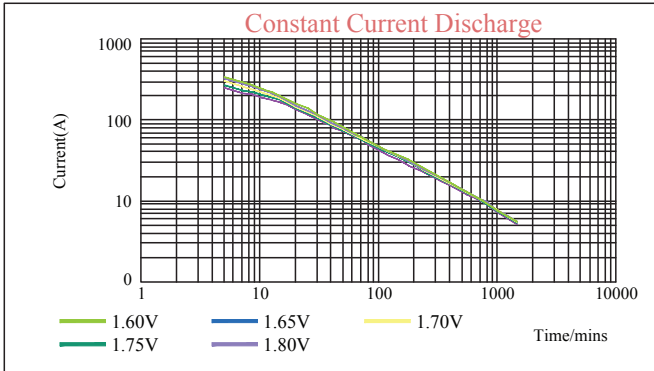
CONSTANT POWER DISCHARGE (Watts) AT 25 °C

End Voltage Volt/Cell	3min	5min	10min	15min	20min	25min	30min	45min	60min
1.60V	1356	1134	864	730	620	545	485	355	277
1.65V	1341	1115	852	716	608	535	472	344	270
1.67V	1335	1107	847	710	604	531	466	340	267
1.70V	1304	994	817	700	584	513	447	329	257
1.75V	1264	976	804	678	559	491	431	315	247
1.80V	1227	956	789	643	544	479	412	302	236



ESH 12-710W FR

SMF VRLA RECHARGEABLE BATTERY



Note:
GPSGC reserves the right to make changes to the above values without any notice.
All data and discharge characteristics are average values based on actual discharge cycle tests performed and not minimum values.

v205.2