



ESC 150-12 AGM

12V - 150Ah

INTRODUCTION

The most popular series of ROCKET Batteries; The ESC series has been performing with a proven track record for more than 52 years. It has successfully exemplified its quality and reliability in some of the most demanding power conditions by providing unrelentless backup power supply.

With the same characteristics as that of the ES series, the ESC series provides power reliability to applications which require longer backup time.

This series is widely used in UPS as well as Telecommunication Applications in many parts of the world. The ESC series is world renowned and recognised as a Highly reliable Battery System in the industry.

TECHNICAL FEATURES

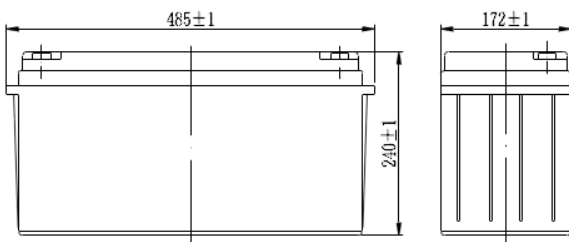
- Non-Spillable Sealed Construction
- Absorbent Glass Mat System (AGM System)
- ABS (Acrylonitrile Butadiene Styrene) container and cover
- Gas Recombination
- Maintenance-Free Operation
- Low Pressure Venting System
- Heavy - Duty Grids
- Low Self-Discharge - Long Shelf Life
- Wide Operating Temperature Range

APPLICATIONS

- UPS
- Telecom Communication Equipments
- Fire Alarm & Security Systems
- Medical Instruments
- Emergency Lighting
- Computer Backup

COMPLAINTS STANDARD

- IEC 60896 PART 1 & 2
- BS6290-4,
- Eurobat Guide - HIGH Performance



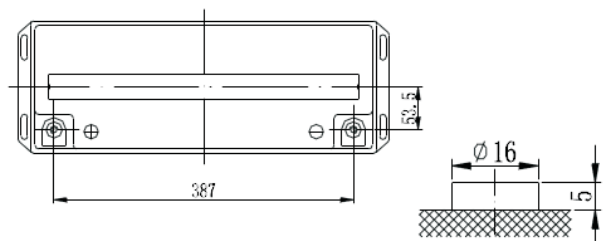
SPECIFICATION

Nominal Voltage		12V
Capacity (20HR, 25°C)		150Ah
Dimension	Length	485mm (19.09inch)
	Width	172mm (6.77inch)
	Height	240mm (9.45inch)
	Total Height	240mm (9.45inch)
Approx Weight		47kg (103.6lbs)
Design Life		12 Years

CHARACTERISTICS

Capacity 25°C (77°F)	20 hour rate	150Ah	
	10 hour rate	147Ah	
	5 hour rate	132.5Ah	
	1 hour rate	102Ah	
Internal resistance (Fully charge, 25°C)		3.5mΩ	
Self-discharge (20°C)	1 month	Remaining Capacity:97%	
	Operating temperature range	Discharge	-20°C~60°C
		Charge	-10°C~60°C
	Storage	-20°C~60°C	
Maximum discharge current		77°F(25°C) 1000A(5 Sec.)	
Short circuit current		2800A	
Charge Methods (Constant Voltage Charge 77°F(25°C)) - Cyclic Use	Cycle Use 14.4 to 14.7V		
	Max. charging Current 45A		
Charge Methods (Constant Voltage Charge 77°F(25°C)) - Standby Use	Temp. compensation - 30mV/°C		
	Standby Use 13.6-13.8V		
		Temp. compensation - 20mV/°C	

THE BATTERY CONTAINER AND COVER ARE AVAILABLE BOTH IN ABS plastic and Flame Retardant (FR).





ESC 150-12 AGM - VRLA

12V - 150Ah

CONSTANT CURRENT DISCHARGE (Amperes) at 25°C

End Point Volts/Cell	5min	10min	15min	20min	25min	30min	35min	40min	45min	50min	55min
1.60V	450	351	285	230	192	165	148	136	124	115	108
1.65V	419	330	270	220	184	160	144	133	121	112	105
1.70V	388	309	256	210	176	155	140	129	118	109	102
1.75V	356	289	242	199	168	149	136	125	114	106	99
1.80V	320	266	228	188	160	146	132	120	110	102	95.8

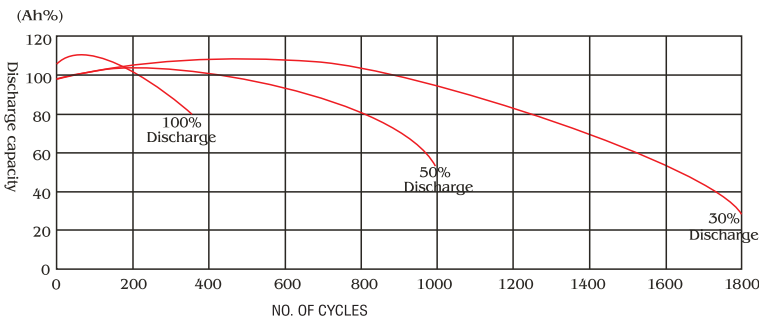
End Point Volts/Cell	1h	1.25h	1.5h	1.75h	2h	2.25h	2.5h	2.75h	3h	4h	5h	6h	7h	8h	9h	10h	12h	24h
1.60V	102	84.5	73.4	65.5	59.4	54.0	49.3	45.8	41.2	34.2	28.0	23.9	20.0	18.6	17.2	15.9	13.1	7.05
1.65V	100	82.5	71.6	63.9	57.9	53.0	48.4	45.0	40.3	33.7	27.6	23.6	20.7	18.4	17.0	15.7	13.0	7.01
1.70V	98.0	80.5	69.8	62.3	56.4	51.9	47.5	44.2	39.5	33.2	27.1	23.3	20.4	18.2	16.8	15.5	12.9	6.96
1.75V	95.0	78.5	68.0	60.6	54.9	50.9	46.6	43.8	38.6	32.7	26.5	23.0	20.1	18.0	16.6	15.3	12.8	6.91
1.80V	92.0	76.5	66.2	59.0	53.4	49.8	45.7	43.0	37.5	32.1	26.0	22.7	19.8	17.8	16.4	15.0	12.7	6.87

CONSTANT POWER DISCHARGE (Watts per cell) at 25°C

End Point Volts/Cell	5min	10min	15min	20min	25min	30min	35min	40min	45min	50min	55min
1.60V	765	609	501	436	365	325	294	263	221	210	205
1.65V	734	579	483	416	350	315	286	256	216	208	203
1.70V	686	548	465	395	334	306	278	249	211	206	201
1.75V	638	519	446	374	320	296	270	242	206	204	199
1.80V	591	487	425	353	305	286	262	235	202	202	197

End Point Volts/Cell	1h	1.25h	1.5h	1.75h	2h	2.25h	2.5h	2.75h	3h	4h	5h	6h	7h	8h	9h	10h	12h	24h
1.60V	201	156	138	123	112	101	95.3	86.8	78.0	65.2	53.5	46.7	40.7	36.2	32.5	29.5	24.8	13.6
1.65V	198	153	135	121	110	99.5	94.1	85.8	77.1	64.4	53.2	45.9	40.0	35.6	32.1	29.1	24.6	13.4
1.70V	195	150	132	119	108	98.0	92.9	84.7	76.2	63.6	52.8	45.1	39.3	35.0	31.6	28.7	24.3	13.2
1.75V	190	147	130	117	106	97.5	91.7	83.7	75.3	62.8	52.5	44.2	38.6	34.4	31.1	28.3	24.0	13.0
1.80V	184	144	128	115	105	96.0	90.4	82.6	74.0	62.0	52.0	43.3	37.8	33.7	30.5	27.9	23.7	12.8

ESC-CYCLE LIFE EXPECTANCY



Discharge Characteristics

